



GMT MONTHLY MEMBERSHIP PROGRESS REPORT

Results as of: 5/31/2017

Multiple District 3

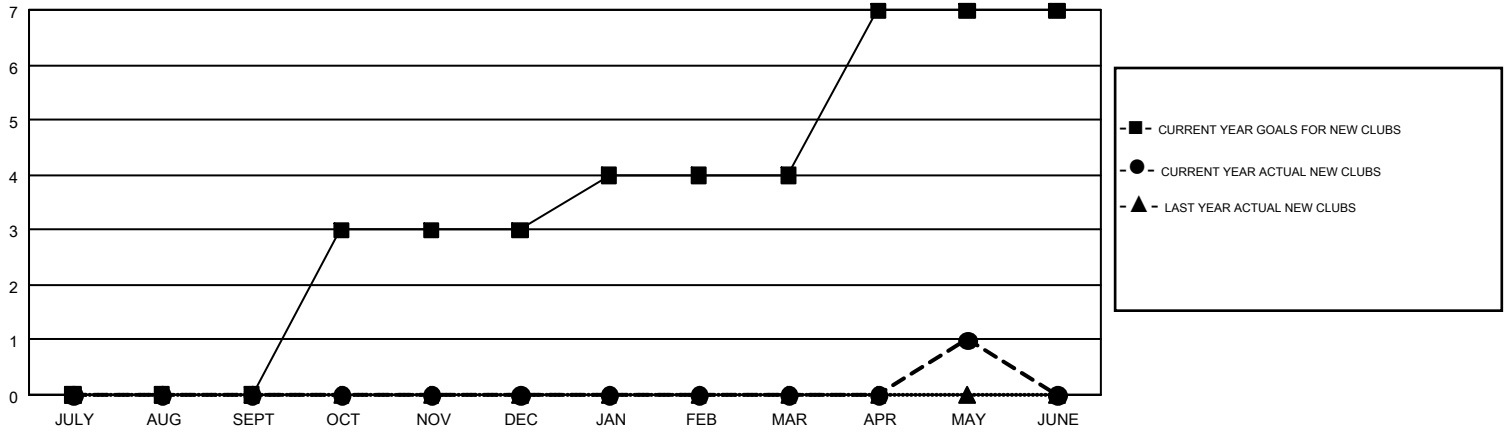
LOCATION: OKLAHOMA

GMT: HAL GRIFFIN

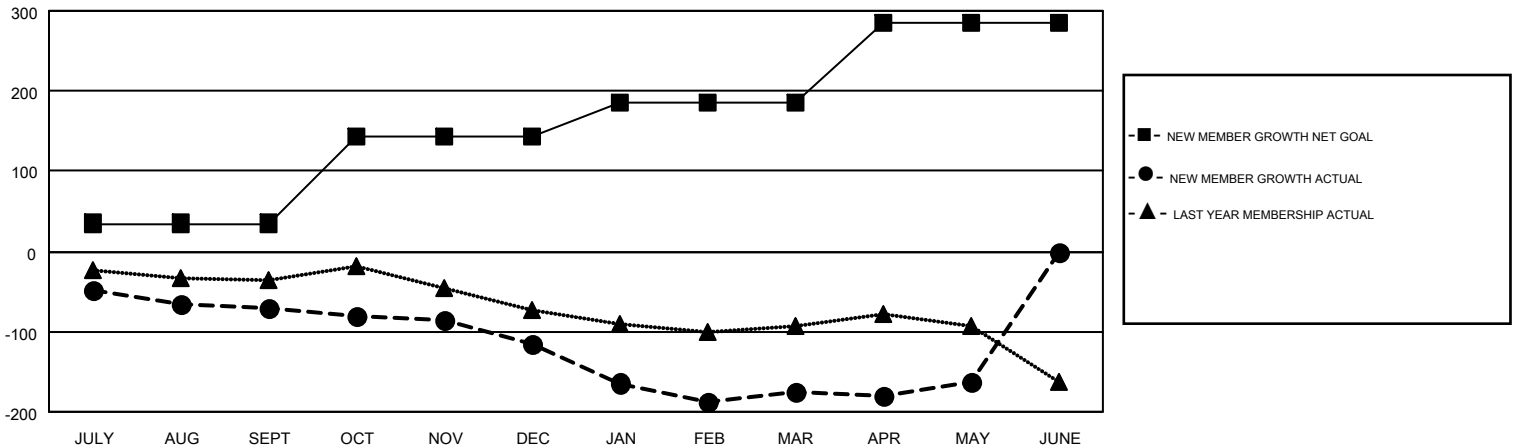
GMT CA 1

Clubs				Members			
RESULTS FOR 2016-2017				RESULTS FOR 2016-2017			
QUARTER	NEW CLUB GOAL	NEW CLUBS	DROPPED CLUBS	QUARTER	NEW MEMBER GROWTH NET GOAL (not reinstated or transfers)	NEW MEMBER GROWTH ACTUAL (not reinstated or transfers)	DROPPED MEMBERS ACTUAL (including transfers)
JULY/AUG/SEPT	0	0	3	JULY/AUG/SEPT	35	94	165
OCT/NOV/DEC	3	0	1	OCT/NOV/DEC	108	64	109
JAN/FEB/MAR	1	0	0	JAN/FEB/MAR	42	86	146
APR/MAY/JUNE	3	1	0	APR/MAY/JUNE	101	96	82

GOALS AND ACTUAL NEW CLUBS CUMULATIVE



GOALS AND ACTUAL MEMBERS CUMULATIVE



DROPPED CLUBS: 4	104 CLUBS OF 167 ADDED 1 OR MORE NEW MEMBERS	GENDER DISTRIBUTION MALE 2,875 (70.26%) FEMALE 1,217 (29.74%)
DROPPED MEMBERS DECEASED 58 CLUB CANCELLED 20 OTHER 424 TOTAL 502	CLICK HERE FOR CUMULATIVE MEMBERSHIP DATA	TOTAL FAMILY UNIT MEMBERS 579 FAMILY MEMBERS PAYING HALF DUES 296